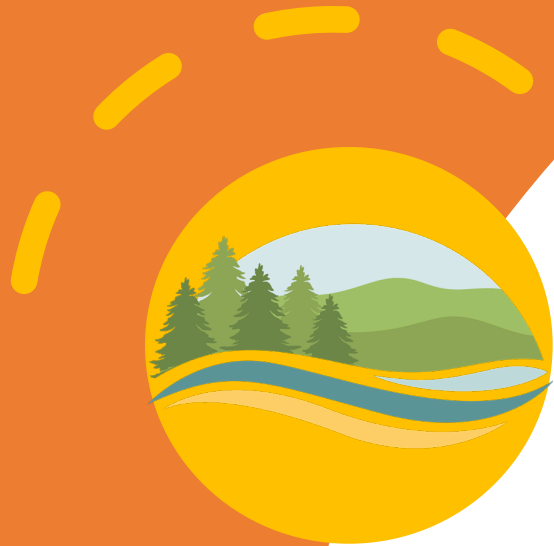


2023 NASLR Field Trip



The 2023 NALSr Field trip will traverse westwards up through the physiographic area known as the Allegheny Front, the westward edge of the Appalachian Mountains, where so much strata is readily available that both historical and ongoing mining for coal, limestone, sandstone, and fireclay have resulted in significant impacted landscapes and watersheds.

-The first stop will include a Title V coal refuse valley-fill reclamation site where current operations have removed millions of tons of coal refuse that are routed to a cogeneration powerplant that burns the refuse and provides the alkaline ash backfill for the reclamation of the source area.

-Our second stop is one of the actual cogeneration powerplants, where we will enjoy a thorough guided tour of the facility and gain an understanding of the entire process. The first two sites lie atop several abandoned coal mine complexes, and

- Our third stop will enable us to see how an extensive impacted underground coal mine pool that majorly affected residential areas and aquatic environments is about to be drastically improved via the construction of a Title IV AMD chemical treatment plant that will eliminate the AMD surface discharges and return treated water to the affected receiving stream, ultimately helping to restore and manage up to 24 miles of stream habitat.

- Traversing back to our conference center we'll get a look at how transportation up and across the steep Allegheny Front was accomplished during the peak of the coal boom in the 1800's at the Allegheny-Portage National Historic Site and the Altoona Curve Historical Park.

-As time permits see and learn about current reclamation efforts to restore historically unusable water resources to the City of Altoona.

